



Cassettes Range



KN and KXL range

Airwell
Air Conditioning

Discreet presence, comfort, versatility... so many benefits characterising the Airwell cassettes range.

With their proven technology combined with contemporary design in line with current trends, the **KN and KXL** range of cassettes offer optimal air conditioning and silent running, coupled with unequalled air quality.

Thanks to their clean lines and choice of formats (600x600, 900x900), these cassettes blend perfectly into all types of decors and are particularly suited to tertiary premises as they meet all the air conditioning needs of small, medium and large surface areas.

In addition to their aesthetic qualities, the models in this range have been designed to provide a very high level of user comfort as well as being extremely easy to install.

Energy		Air-conditioner
Manufacturer		
Outside unit		GC 9NRC
Inside unit		K9 NRC
More efficient		A
Less efficient		
Annual energy consumption kWh in cooling mode <small>(Actual consumption will depend on how the appliance is used and climate)</small>		
Cooling output	kW	2,82
Energy efficiency ratio <small>Full load (the higher the better)</small>		3,27
Type		
Cooling only		
Cooling + Heating		←
Air cooled		←
Water cooled		
Heat output	kW	
Heating performance <small>A: higher G: lower</small>		
Noise <small>(dB(A) re 1 pW)</small>		32
Further information is contained in product brochures		
<small>Norm EN 814 Air-conditioner Energy Label Directive 2002/31/EC</small>		



The **KN and KXL** cassettes range is available with the environmentally friendly **R410A** refrigerant fluid (with the exception of the **KXL 36-45** models operating with **R407C**). The **R410A** fluid offers high energy efficiency, whilst protecting the ozone layer and being easily recyclable. Its high volumetric mass and considerable energy efficiency provide high coefficients of performance and therefore significant energy savings.

■ Aesthetics and discreet presence

Airwell cassettes combine aesthetics with a discreet presence enabling them to meet the demands of all types of applications.

With an extremely low built-in height (just 230 mm for the **KXL 24/30** models), they can be easily matched to all types of installation constraints.

■ Versatility and functionality

With 8 models available, with capacities ranging from 3,020 to 14,200 W, this particularly extensive and therefore versatile range offers a multitude of functionalities such as motorised air sweeping flaps (**KXL**), availability of a suspended ceiling frame as an accessory (**KN**) and even the possibility of air conditioning an adjacent room and introducing new air (**KN**).

This range provides an obvious answer to all types of installation configuration requirements.

■ Proven technology and reliability

Electronic regulation and programming, component reliability, as well as total microprocessor management of all operating and safety parameters guarantee unequalled comfort levels. Outdoor units are equipped with the latest generation of rotary compressors to provide extremely silent running and operation over a wide operating range, as well as excellent performance levels and low energy consumption, in particular thanks to the use of the environmentally friendly **R410A** refrigerant fluid.

■ Unequaled comfort

With evenly distributed treated air, high quality filtration, particularly low noise levels and high performance, this range with its precise infrared remote control, offers the highest possible user comfort levels.



■ Airconet control system

Thanks to the communication gateway to which several cassettes can be connected, and by using a simple Internet navigator programme, the Airconet system allows for centralised and remote management of all your indoor units (by group of indoor units, by room, by floor...).

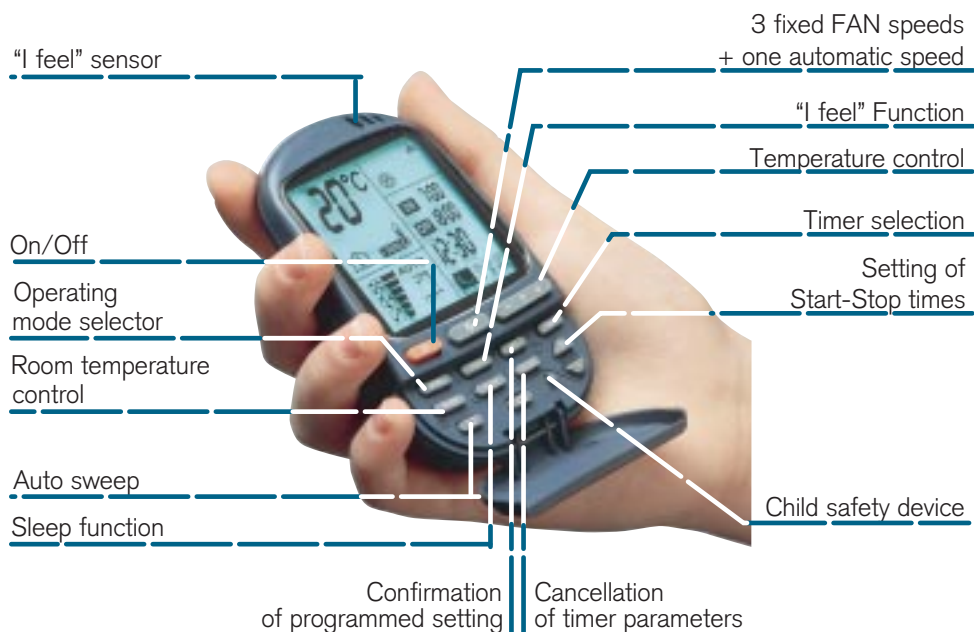
In addition to improved occupier comfort (programming the unit to operate before the occupants' arrival), reduced energy bills thanks to precise and individual unit consumption control and a simplified system management, the Airconet system requires no specific software installation and enables you to be informed of any incident in real time by e-mail or SMS.

The finest proof of a product's performance and aesthetics is when you forget it's there!

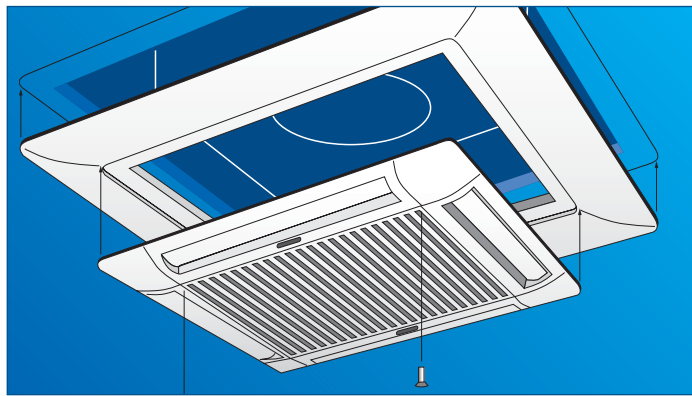
■ Infrared remote control

Small-size and with excellent ergonomic properties, the AIRWELL infrared remote control is highly user friendly. It can be used to program advanced multiple functions such as choosing between 3 ventilation speeds, night-time slow running, programming, dehumidification, the energy saving function and "I feel" function, and many others.

One press of a button is all it takes for the desired temperature to be obtained and controlled with a high degree of precision.



■ KN Indoor units



The ceiling frame, available as an accessory, allows for a large opening to be made in suspended ceiling to make on-site installation easier (electrical and pipe connections).

■ Outdoor units

The heat-stable polyester material structure provides a reduction in the noise level, weight and a prolonged service life. The anticorrosion treatment with a High density powder paint coating ensures high resistance whatever the operating conditions.

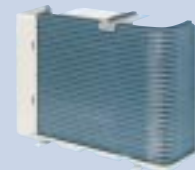


GCNG 9/12/14 N



❖ COMPRESSOR

A variable power DC INVERTER rotary type, this compressor provides high efficiency and increased acoustic isolation.



❖ CONDENSER

"Bluefin" hydrophilic treatment promotes the flow of condensates, while also providing corrosion protection to maintain performance levels and prolonging the service life.



❖ PROPELLER

With 3 aerodynamic blades, the propeller offers better balance, enhances the exchange process and makes silent operation possible.

Its ability to be harmoniously integrated in 600x600 format suspended ceiling panels and its low height (287 mm), makes it the obvious answer for all types of installation constraints.

■ Simplified installation and maintenance



Fresh air intake
 Extra quiet turbine
 Sliding electrical junction



Condensate raising pump: multi-level float for monitoring and safety. Raising height up to 600 mm. Quick to remove: only 1 mounting point.



Direct access to all electrical connections.

■ KXL Indoor units



900 X 900

KXL 24/30/36/45

■ Outdoor units

The heat-stable polyester material structure provides a reduction in the noise level, weight and a prolonged service life.

The anticorrosion treatment with a High density powder paint coating ensures high resistance whatever the operating conditions.



GCN 24



GCN 36/43 T

The KXL cassettes range represents the ideal compromise for tertiary premises air conditioning:

- ❖ **Ease of integration** thanks to its clean lines and discreet presence.
- ❖ **Ease of installation** thanks to its standard 900 x 900 format and its low height (230 mm for models 24-30, 300 mm for models 36-45).
- ❖ **Functionality thanks to its four motorised blowing flaps**, integrated condensate drainage pump, electronic regulation and programming, single-phase connection possibility (models 24-30).
- ❖ **Adaptability** thanks to heat pump technology allows premises to be cooled or heated as required.
- ❖ **Ease of maintenance** thanks to quick access to all components, after simply removing the fascia.
- ❖ Suitable for significant air conditioning requirements thanks to a **broad range of capacities available**.

CASSETTES RANGE



KN and KXL Series

		K9 N K9 N RC	K11 N K11 N RC	K15 N K15 N RC	K18 N K18 N RC	KXL N 24 KXL N 24 RC	KXL N 30 KXL N 30 RC	KXL 36 KXL 36 RC	KXL 45 KXL 45 RC
Cooling Capacity⁽²⁾	kW	2,82	3,68	4,35	5,6	6,77	8,3	10,1	12,5
Power input	kW	0,86	1,14	1,35	1,82	2,25	2,9	3,6	5
EER / Energy Label		3,27 / A	3,22 / A	3,22 / A	3,07 / A	3,01 / B	2,88 / C	2,80 / C	2,50 / E

Heating capacity⁽¹⁾	kW	3,02	3,81	4,46	5,75	7,08	8,65	10,8	14,2
Power input	kW	0,83	1,11	1,23	1,67	2,33	2,74	3,84	5,26
COP / Energy Label		3,63 / A	3,43 / B	3,63 / A	3,44 / B	3,04 / D	3,16 / D	2,81 / D	2,70 / E

Indoor units		K9 N	K11 N	K15 N	K18 N	KXL 24 N	KXL 30 N	KXL 36	KXL 45
Air flow (LS/NS/HS)	m ³ /h	430/470/580	375/500/580	430/550/630	590/660/760	690/800/910	985/1120/1120	1025/1125/1220	1200/1330/1525
Acoustic pressure to 1m (LS/NS/HS) ⁽³⁾	dB(A)	32/34/41	34/36/41	36/41/44	44/46/49	38/41/44	47/50/52	42/44/46	45/47/50
Dehumidification	l/h	0,8	1,3	1,6	2,4	2,50	4,20		
Net Weight	kg	22,7	24,4	25,8	25,8	36	36	48	48
Built in casing (LxIxH)	mm	571x571x287	571x571x287	571x571x287	571x571x287	840x840x230	840x840x230	840x840x300	840x840x300
Fascia (LxIxH)	mm	625x625x40	625x625x40	625x625x40	625x625x40	950x950x46	950x950x46	950x950x46	950x950x46

Outdoor units		GC 9 N GC 9 NRC	GC 12 N GC 12 NRC	GC 14 N GC 14 NRC	GC 18 N GC 18 NRC	GCN 24 GCN 24 RC	GCN 30 GCN 30 RC	GCN 36 GCN 36 RC	GCN 43 GCN 43 RC
Airflow	m ³ /h	1 780	1 850	2 160	2 480	3 100	3 150	4 150	4 345
Acoustic pressure to 1m	dB(A)	49	51	54	55	54	60	65	70
Compressor type		Rotary	Rotary	Rotary	Rotary	Rotary	Rotary	Scroll	Scroll
Operating limits Winter/Summer		- 10 °C / + 43 °C							
Net Weight	kg	35	36	42	56	74	78	93	95
Dimensions (WidthxDepthxHeight)	mm	795x290x610	795x290x610	795x290x610	850x370x690	900x340x680	900x340x860	900x350x970	900x350x970

Linking specifications between indoor and outdoor units

Power supply 1~230 V - 50 Hz

Power supply side		Indoor	Indoor	Indoor	Ind. or Outd.	Ind. or Outd.	Outdoor	-	-
Power cable section	mm ²	3x1,5	3x1,5	3x1,5	3x1,5	3x2,5	3x4	-	-
Fuse am	A	8	8	12	12	20	25	-	-
Electrical connections Ind./Outd.	mm ²	5x1,5	5x1,5	5x1,5	5x1,5	5x2,5 / 6x2,5	6x2,5	-	-

Power supply 3N-400 V

Power supply side		-	-	-	Ind. or Outd.	Outdoor	Outdoor	Outdoor	Outdoor
Power cable section	mm ²	-	-	-	5x1,5	5x1,5	5x2,5	5x2,5	5x2,5
Fuse am	A	-	-	-	6	10	16	16	16
Electrical connections Ind./Outd.	mm ²	-	-	-	6x1,5	6x1,5	6x2,5	6x2,5	6x2,5

Linking pipes (not supplied)

Max. length	m	15	15	15	25	30	30	50	50
Max. height	m	7	7	7	15	15	15	25	25
Suction pipe diameter	Inchs	3/8"	3/8"	1/2"	1/2"	5/8"	5/8"	3/4"	3/4"
Liquid pipe diameter	Inchs	1/4"	1/4"	1/4"	1/4"	3/8"	3/8"	3/8"	3/8"

(1) Nominal heating capacity: International conditions 20°C/12°C wet bulb – Outside air temperature: 7°C/6°C wet bulb. (2) Nominal cooling capacity: International conditions (NF EN 255.2 / 814.2 standards) - 27°C/19°C wet bulb – Outside air temperature: 35°C/24°C wet bulb. (3) Global acoustic pressure in dB(A) (1 m) at nominal conditions: outdoor unit in an open area against a reflective background – indoor unit : installation in an average sized room, (PV-0.5s reverberation).

Airwell



ACE MARKETING - I bis, av. du 8 mai 1945 - Saint-Quentin-en-Yvelines
F - 78284 Guyancourt Cedex
Fax : +33 (0) 1 39 44 65 17 - Tel.: +33 (0) 1 39 44 78 00
www.airwell.com

Your approved **Airwell** distributor

